

Gretshelle Rivera

Portfolio 2014

Contact:

Email: gretshellerivera@gmail.com

Phone: 301 250 5578

Portfolio: <http://cosmimothstudios.weebly.com/>

LinkedIn: [http://www.linkedin.com/pub/
gretshelle-rivera/54/b62/13a](http://www.linkedin.com/pub/gretshelle-rivera/54/b62/13a)

Portfolio Table of Contents

Graphic Design

Personal Promo Work

Commercial Promo Work

Personal Illustration Work

Traditional Medium

Digital Medium

Children's Book

Pages from *The Skylight Companion*

Pages from *The Little Pumpkin Hen*

Works from Life

Drawings

Full Figure Studies

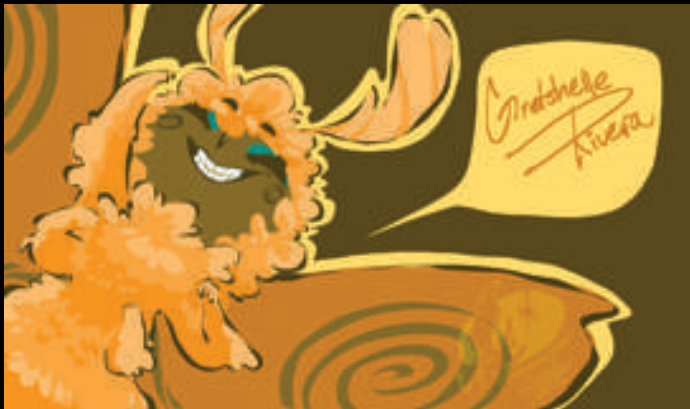
Still Life

Sculpture

Portrait Study

Full Figure Study

Graphic Design:
Personal Promo Work



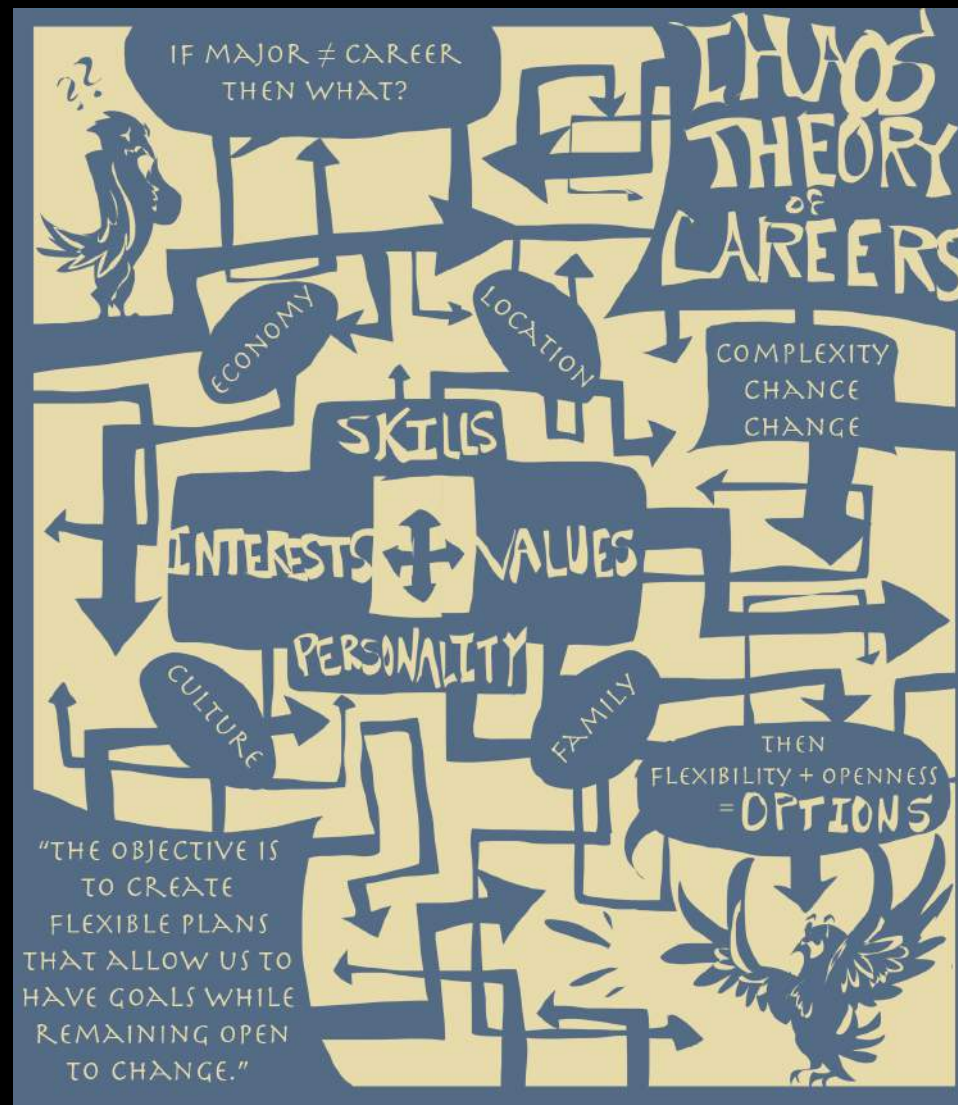
CosmithmothStudios Business Card Front, feat. Oregano the Moth, digital, 2013

Owlleclawdraws Digital Promotion, digital, 2014

Oregano the Moth in Various Lighting, digital, 2014



Graphic Design: Commercial Promo Work



Commissioned by St. Mary's College
of Maryland-Career Development Center:
Career Chaos Theory Info-Graph Poster,
digital, 21"x 24", 2012



Commissioned by St. Mary's College of Maryland-Career Development Center:
Hawltalk Event Promotion Slip, digital,
9"x 5", 2012

Personal Illustration Work:
Traditional Medium



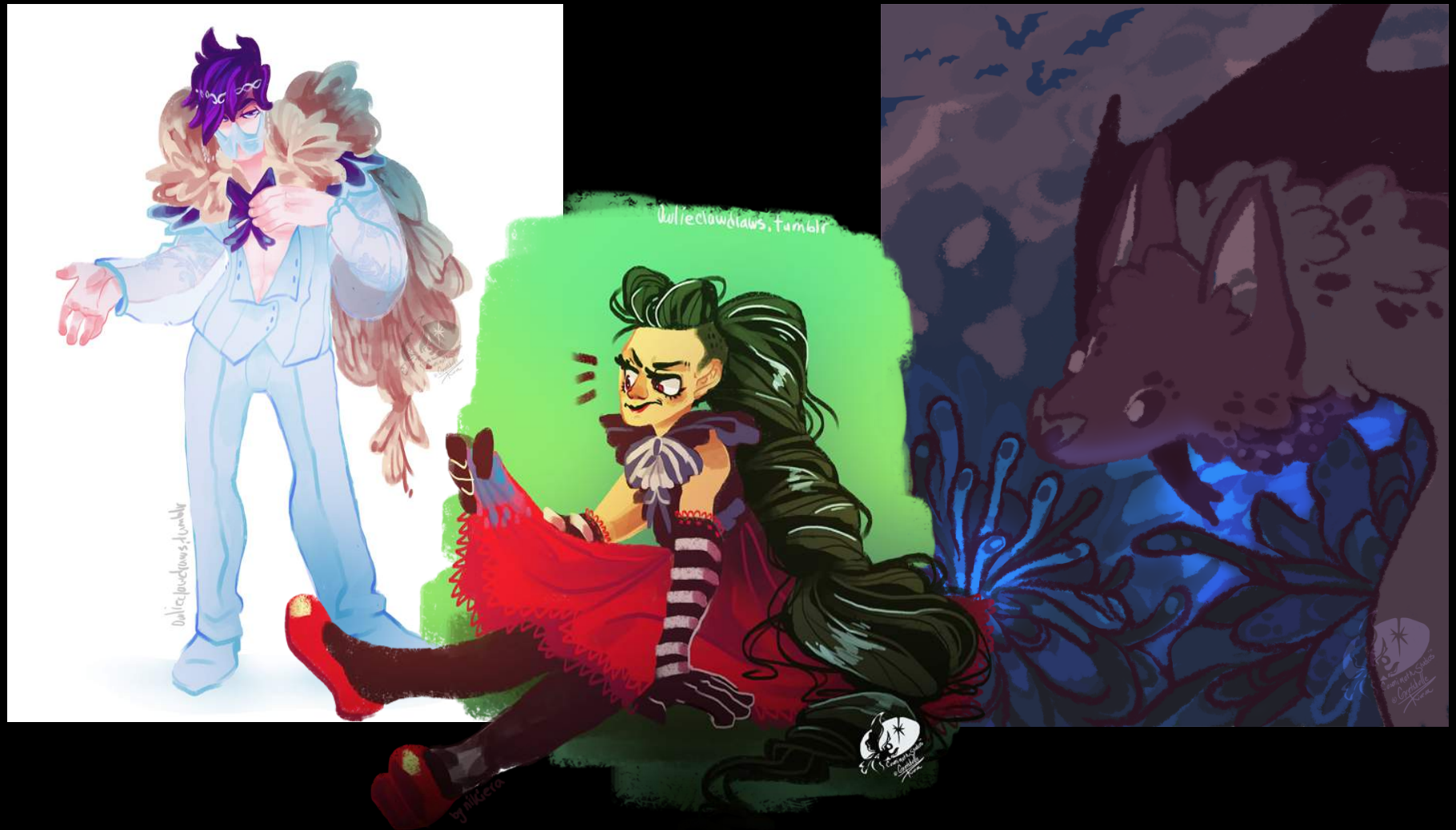
Aspire to Be, watercolor, 11"x14", 2013



Lunet's Castle, watercolor, 11"x14", 2013

Commission, digital, 2014

Nectar Bat, digital, 2014



Commission, digital, 2014

Personal Illustration Work:
Children's Book

The Skylight Companion, page
selections, watercolor, 11"x14",
2013



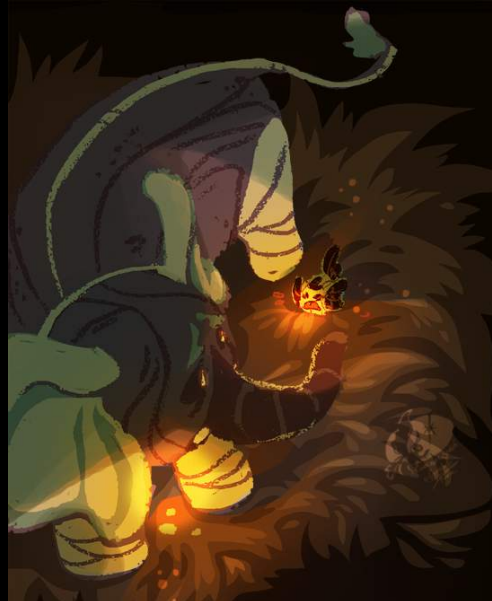
The Little Pumpkin Hen, page
selections, Digital, 5.5"x 8.5", 2014



The foxes barely noticed the arrival of
the little hen as she approached.
"What a tiny hen" the brown fox said



The hen sniffles, "I want to be happy too!"



the elephant noticed the hens dying flame and
tried to reach out with its trunk to help.
Still agitated the hen snapped back,
"NO! Don't touch me."
"You're just going to hurt me like everyone else."



"Oh." A voice called from the dark.
Another chicken, much taller than the hen approached.
In defense, the hen hid her weakend candle and blurted,
"Don't come near me! Don't blow me out!"

Works from Life:
Drawings

Full Figure Studies



Gestures and Light Study, Ink and Marker, 9.5"x11", 2012



Eliza Study, Ink and Marker, 11"x17", 2012

Works from Life:
Sculptures

Portrait Bust



Bust of Marche, clay, life sized, 2013

Full Figure Study



Sitting Eliza, clay, 17" tall, 2013